

32/29

29

CURVE DATA

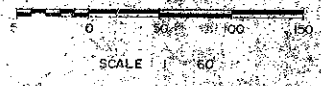
R.U.D. BROOKFIELD - SECTION I

A PLAT OF A PORTION OF SEC. 26 & 27, TWP. 47 S., RGE. 42 E.
AND ALSO BEING A REPLAT OF A PORTION OF TRACT "B", BOCA DEL MAR NO. 1, AS RECORDED
IN PLAT BOOK 29, PAGES 148-150 OF THE PUBLIC RECORDS OF PALM BEACH COUNTY, FLORIDA
PALM BEACH COUNTY, FLORIDA

JOHN A. GRANT, JR., INC. CONSULTING ENGINEERS & LAND SURVEYORS BOCA RATON, FLORIDA

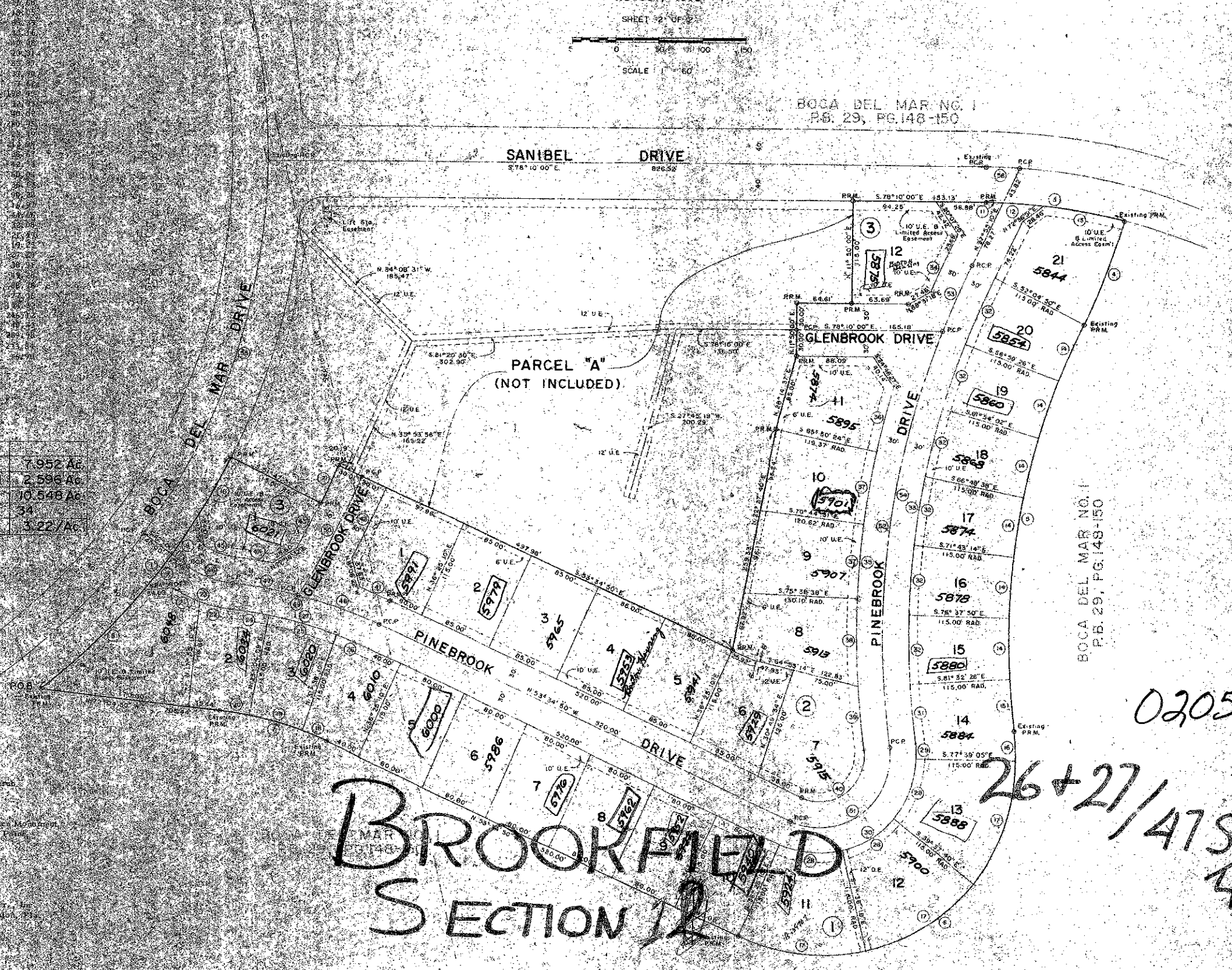
AUGUST, 1975

SHEET 2 OF 2



BOCA DEL MAR NO. 1
P.B. 29, PG. 148-150

USE	SINGLE FAMILY
AREA OF LOTS - SECTION I	7.952 AC.
AREA OF ROADS - SECTION I	2.596 AC.
TOTAL AREA - SECTION I	10.548 AC.
NO. OF UNITS - SECTION I	34
DENSITY - SECTION I	3.22/AC.



39

0205-319

26+27/47S

42E 32/29

BROOKFIELD SECTION 12